

Millersburg Parks Commission Meeting

July 15, 2025 6:00 PM



For those online, the
meeting will begin shortly

Administration

- Changes & Additions to the agenda
- Appointment of Chair and Vice Chair



Meeting Minutes

- Approval of April 16, 2024 meeting minutes

Approved

I move for the adoption of the Consent Agenda as presented OR with item #___ removed.

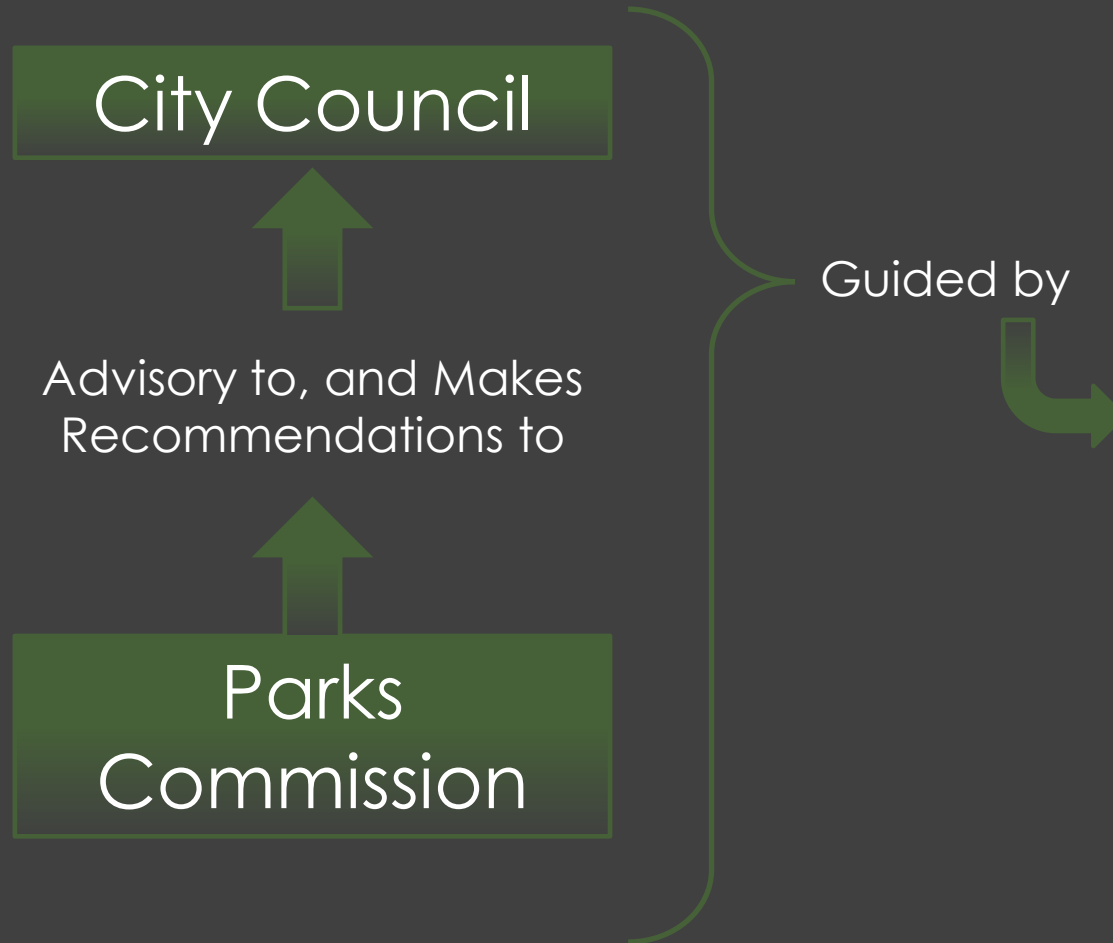
Unfinished Business



New Business



Commission & Master Plan Overview



Current and Recent Completed Projects

- Path connection to BB court
- Powder coat backboards, new nets, new hoops
- Crack sealed path
- Cornhole
- Barricades at Acorn Park
- Bathroom doors painted, new signs
- Bench updates
- Parking lot/basketball striping



FY 2025-26 CIP Projects

- Drainage around shelter
- Resurface of tennis courts
- Restroom wall coatings
- Playground shade cover



Future 5- Year CIP Projects

- North Park planning and development (26-28)
- North ballfield drainage improvements (26-27)
- Maintenance facility and yard (27-28)



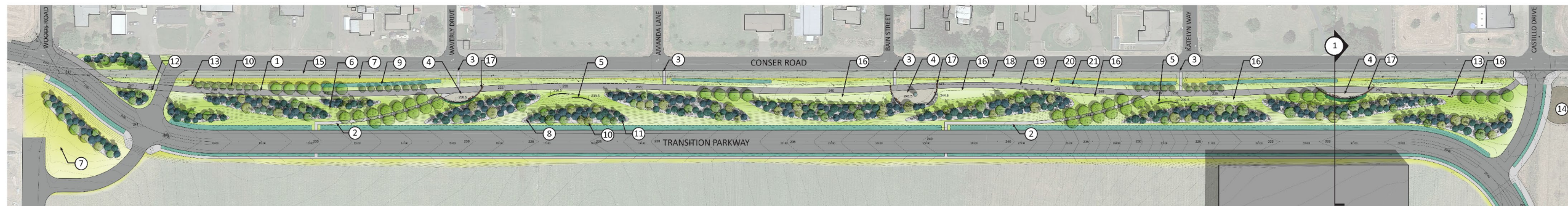
FY 2025-26 Minor/Ongoing Projects

- Tree replacement
- Interior signage
- Bench replacement/addition
- Play safety surface refills (annual)
- Ball field amendment (annual)
- LED lighting at tennis court and parking lot



Specific Items – Park Naming

- Process
- Themes?
- Linear Park needed first
- Remaining parks?



Key Notes

- 1 12' Wide Multi-use Path
- 2 6' Wide Sidewalk
- 3 Connection to Future Crosswalks
- 4 Mini-plaza node

Includes: low landscape walls/seat walls, backed benches, litter receptacles, interpretive sign panels, public art, donor bricks, alternative surface to grass (crushed rock, unit pavers or concrete)

- 5 Landscape Walls
- 6 Maintained Lawn
- 7 Non-Maintained Grass
- 8 Rock Mulch with Boulders and Concrete Edging (9" width)
- 9 Bioswale
- 10 Deciduous Trees

- 11 Conifer/Evergreen Trees
- 12 Pedestrian Scale Lights/Poles
- 13 Bench with back and litter receptacle
- 14 Future Trail Head Plaza (40' radius shown)
- 15 Existing Ditch
- 16 Potential Holiday Display Area
- 17 Donor Bricks - Approx. 1,050

- 18 Existing Utility Poles and OHP Line
- 19 15' Offset from CL Power Poles
- 20 Existing Storm Sewer
- 21 Existing Fiber Optic Cable
- 22 Right-of-Way

Park Design Statistics

Total Linear Park Area:
 12' Multi-use Path: 35,640 SF (2,970 LF)
 6' Sidewalk: 4,464 SF (723 LF)
 Plaza Nodes:
 Landscape Walls/Seat Wall: 345 LF
 Pedestrian Light Poles: 35
 Benches/Litter Receptacles: 7/5
 Bioswale: 8,966 SF
 Lawn/Grass Area: 185,593 SF (4.26 AC)
 Rock Mulch & Boulders: 88,687 SF (2.04 AC)
 Concrete edging curb - 9" width: 6,930 LF
 Conifer/Evergreen Trees: 266
 Deciduous Trees: 165



Section 1
 scale: 3/16"=1'-0"



- Project priorities



STANDARD FABRIC COLORS



WHITE

Shade 57%
UV 86%



SILVER

Shade 88%
UV 93%



LAGUNA BLUE

Shade 92%
UV 96%



ROYAL BLUE

Shade 86%
UV 94%



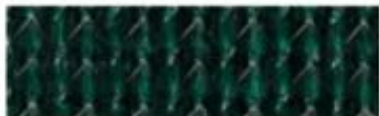
NAVY BLUE

Shade 90%
UV 94%



TURQUOISE

Shade 83%
UV 92%



RAINFOREST GREEN

Shade 89%
UV 96%



DESERT SAND

Shade 80%
UV 92%



BLACK

Shade 95%
UV 96%



SUNFLOWER YELLOW

Shade 70%
UV 94%



TERRACOTTA

Shade 84%
UV 90%



ARIZONA

Shade 86%
UV 91%



ATOMIC ORANGE

Shade 82%
UV 94%



RED

Shade 91%
UV 92%



MULBERRY

Shade 90%
UV 91%



ELECTRIC PURPLE

Shade 84%
UV 90%



ZESTY LIME

Shade 83%
UV 92%



CINAMMON

Shade 88%
UV 93%



OLIVE

Shade 93%
UV 97%



CHOCOLATE

Shade 92%
UV 93%

Specific Items – Shade Cover

- More Examples



Specific Items – Shade Cover

- More Examples



Specific Items - Pickleball

- Potential location
- Priority?
- Unfunded CIP



After months of searching, Warren finally found the elusive empty Pickleball court.

Closing Comments

