



CITY OF MILLERSBURG

1/8"=15'-0"

CONTOUR INTERVAL: --
DATE: AUGUST 2021

THIS MAP HAS BEEN MODIFIED BY PALM HARBOR HOMES FOR SUBMITTAL PURPOSES AND HAS NOT BEEN VERIFIED BY FIELD CHECKS.

DASHED CONTOURS IN AREAS COVERED BY DENSE VEGETATION OR SHADOWS MAY BE LESS THAN STANDARD ACCURACY.

INITIAL PHOTOGRAMMETRY BY:
TRIATHLON LTD.
VANCOUVER, BC, CANADA
(604) 233-5000

HORIZONTAL AND VERTICAL MAP CONTROL BASED ON THE LNN / BENTON COUNTY STATE PLANE COORDINATE SYSTEM, PROVIDED BY: SWANSON LAND SURVEYING VANCOUVER, BC, CANADA

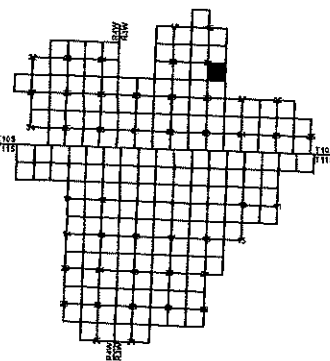
HORIZONTAL DATUM: NAD 83 (1991)
VERTICAL DATUM: NGVD 29

NOTE: DESIGNATED 'MATCH LINES' ARE FOR MAPPING PURPOSES ONLY AND ARE NOT INTENDED TO REPRESENT PROPERTY LINES OR QUARTER SECTION LINES.

* A MONUMENT, FOUND OR SET, AND USED FOR MAPPING CONTROL. FOR MORE INFORMATION, CONTACT LNN / BENTON COUNTY SURVEYOR'S OFFICE.

SYMBOLGY

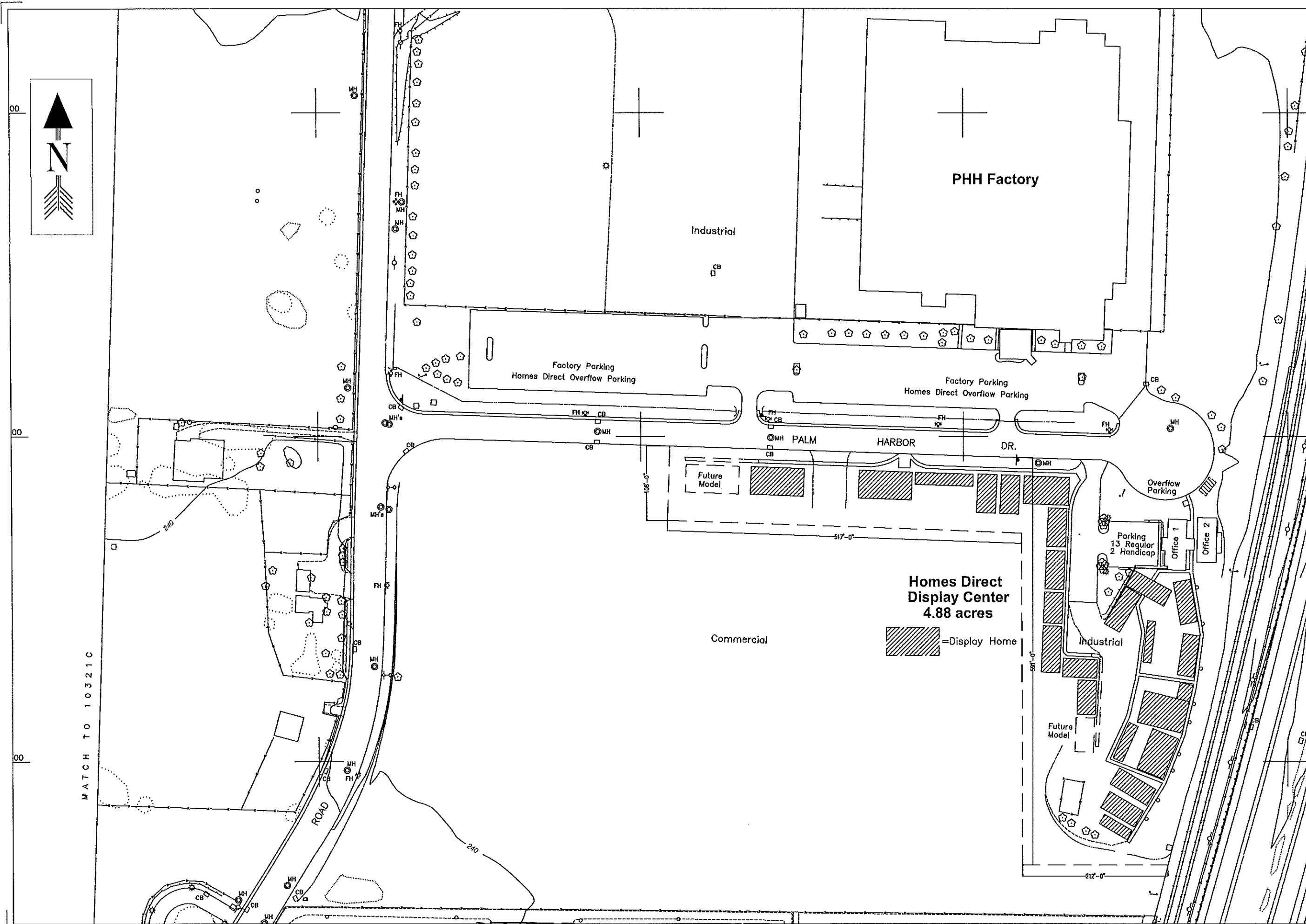
○	Manhole	○	Trunk
□	Cast Iron	○	Electric Pole
■	Cast Steel	○	Electric Pole
△	Valve	○	Gas
▽	Water Meter	○	Water Line
◇	Fire Hydrant	○	Storm Sewer
○	Light	○	Painted Strip
○	Light - Standard	○	Painted Road
○	Light - Oil Standard	○	Bridge
○	Traffic Sign	○	Watering Well
○	Traffic Signal	○	Sign
○	Utility Pole	○	Post
○	Utility Pole - Light	○	Corner
○	Utility Pole	○	Survey Control Point
○	Transformer Line Tower	○	Variable Highway
○	Public Tower	○	US Highway
○	Electric Pole	○	State Highway
○	Electric Pole	○	App. Elevator
○	Electric Pole	○	Quantity
○	Quantity	○	Quantity
○	Quantity	○	Quantity



SE 1/4 SEC. 21
T 10 S, R 3 W

ACAD FILE NAME: 10321D 8-18-21

REVISION	DATE	BY
Original Mapping	1998	3dl, Inc.
Update	2002	Triathlon, Ltd.
Update	2021	Palm Harbor Homes



MATCH TO 10321C