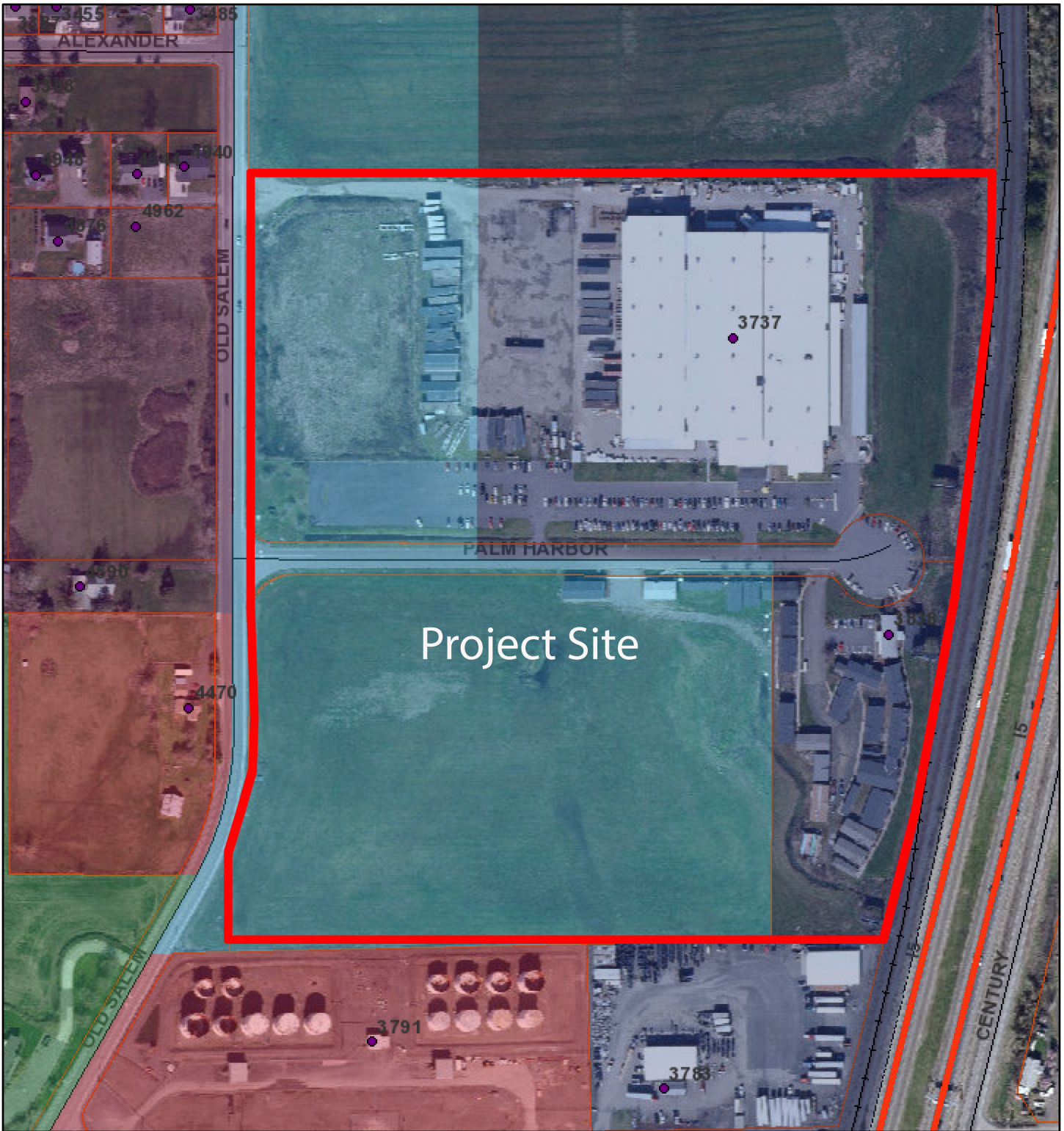


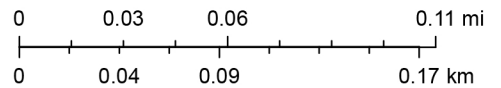
SP 21-04/SIGN 21-03 Zoning



9/13/2021, 2:50:44 PM

1:4,514

- Address
- Highways
- Railroad
- Millersburg Zoning
 - COMMERCIAL OFFICE
 - GENERAL COMMERCIAL
 - GENERAL INDUSTRIAL
 - LIMITED INDUSTRIAL
 - MIXED USE
 - PUBLIC FACILITIES
 - RESIDENTIAL LOW DENSITY
 - RESIDENTIAL MIXED DENSITY



City of Albany, County of Linn, Bureau of Land Management, State of Oregon, State of Oregon DOT, State of Oregon GEO, Esri Canada, Esri, HERE, Garmin, INCREMENT P, USGS, EPA, USDA, Linn County GIS, GeoTerra, 2021