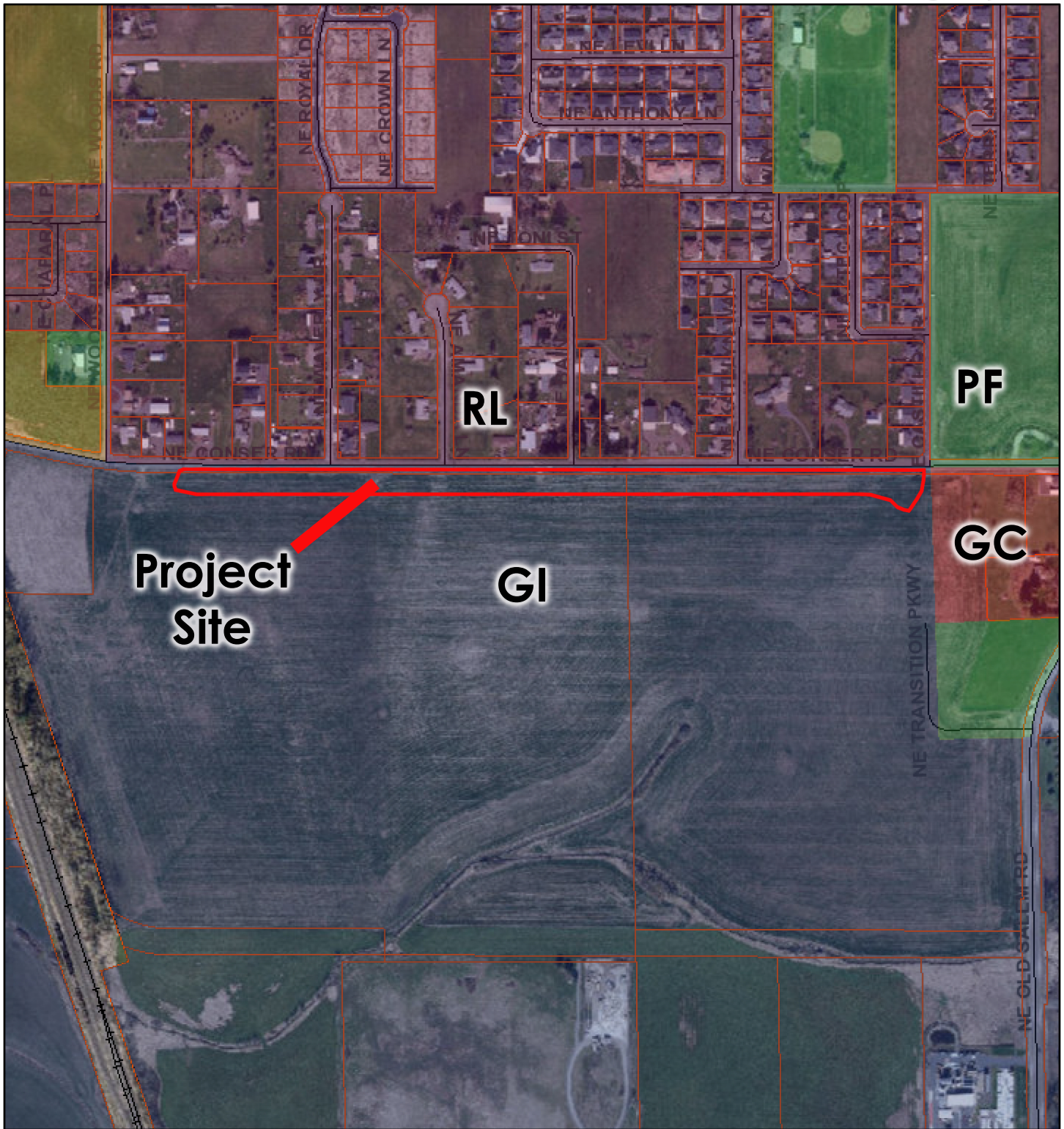


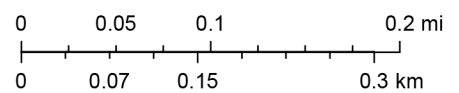
DC 24-01 Zoning



3/19/2024, 10:21:01 AM

1:9,028

- | | |
|--------------------|---------------------------|
| Highways | MIXED USE |
| Railroad | PUBLIC FACILITIES |
| Millersburg Zoning | RESIDENTIAL LOW DENSITY |
| COMMERCIAL OFFICE | RESIDENTIAL MIXED DENSITY |
| GENERAL COMMERCIAL | RURAL |
| GENERAL INDUSTRIAL | LIGHT INDUSTRIAL |
| LIMITED INDUSTRIAL | Tax Lots |



Linn County GIS, GeoTerra, 2021, City of Albany, County of Benton, County of Linn, Bureau of Land Management, State of Oregon, State of Oregon DOT, State of Oregon GEO, Esri Canada, Esri, HERE, Garmin, INCREMENT P, Intermap, USGS, METI/NASA, EPA, USDA

ArcGIS Web AppBuilder

City of Albany, County of Benton, County of Linn, Bureau of Land Management, State of Oregon, State of Oregon DOT, State of Oregon GEO, Esri Canada, Esri, HERE, Garmin, INCREMENT P,