

FILE PATH: P:\15\mcs\Survey\01\15-234\Zuhlk\2017\Drawn\15-234-1000.dwg 2017-4-23 1:09 PM

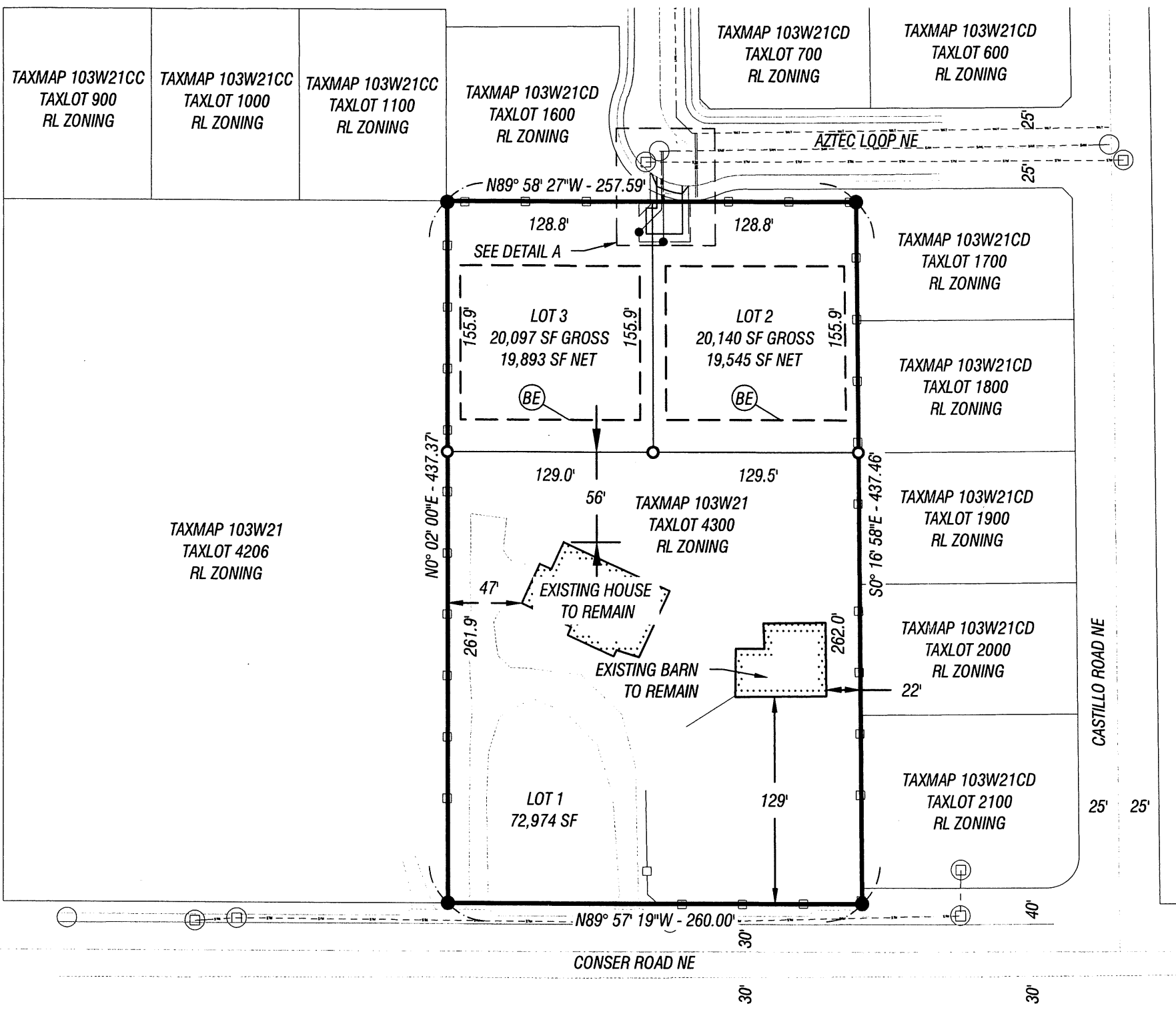
LAYOUT

PROP DESIGN

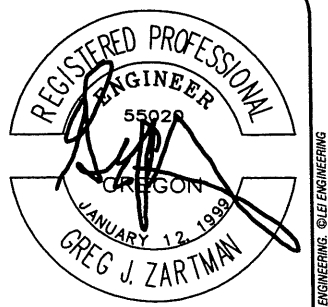
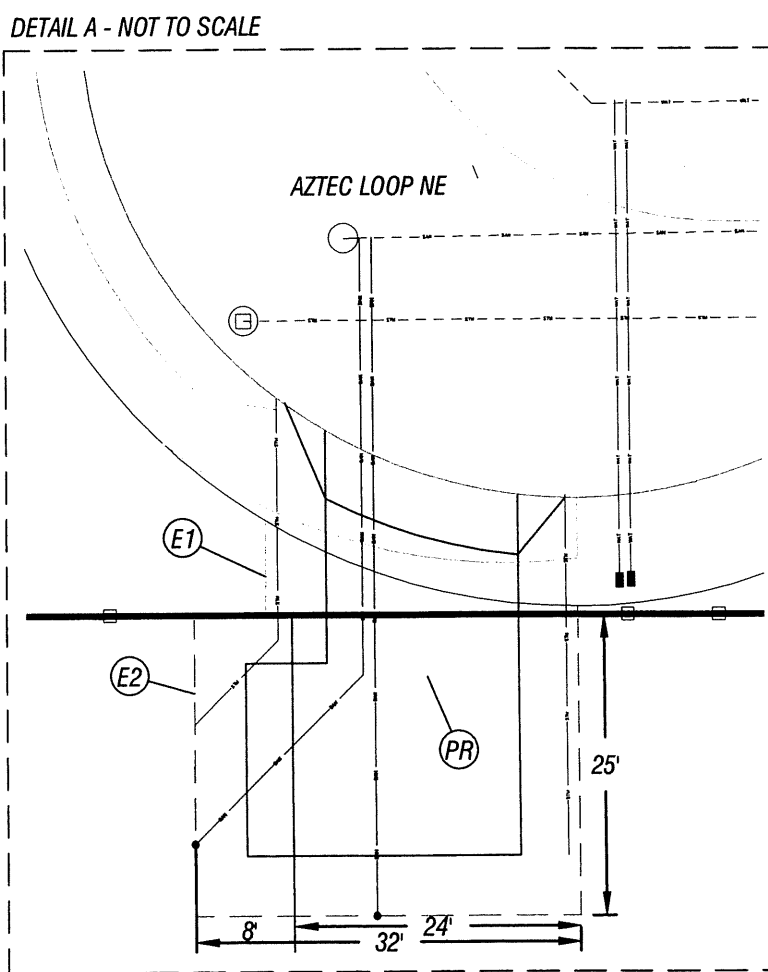
DRAWN

CHECKED

APPROVED



- GENERAL NOTES:**
- (E1) 26' EASEMENT RECORDED DOCUMENT NUMBER
 - (E2) PROPOSED 32' X 25' PRIVATE SHARED ACCESS AND UTILITY EASEMENT FOR THE BENEFIT OF LOT 2 AND LOT 3 OF PROPOSED PARTITION.
 - (PR) PROPOSED PRIVATE SHARED DRIVEWAY 16' WIDE.
 - (BE) BUILDING ENVELOPE PURSUANT TO MILLERSBURG DEVELOPMENT CODE 2.03.060 DIMENSIONAL STANDARDS.



EXPIRES 6-30-2022

ZUHLKE PARTITION
3091 CONSER ROAD

PREPARED FOR:
JANICE ZUHLKE

LEI ENGINEERING & SURVEYING
OF OREGON

2564 19TH ST SE
Salem, Oregon 97302
(503) 399-3828
www.leiengineering.com

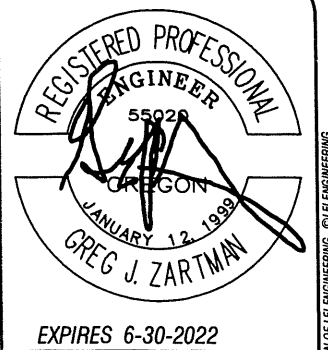
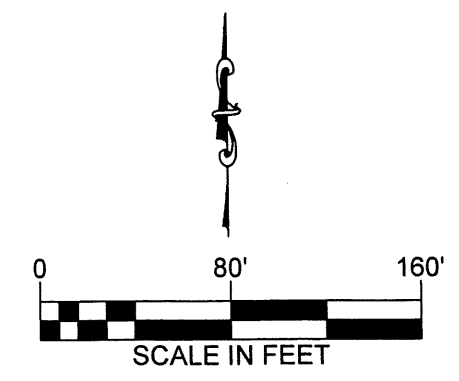
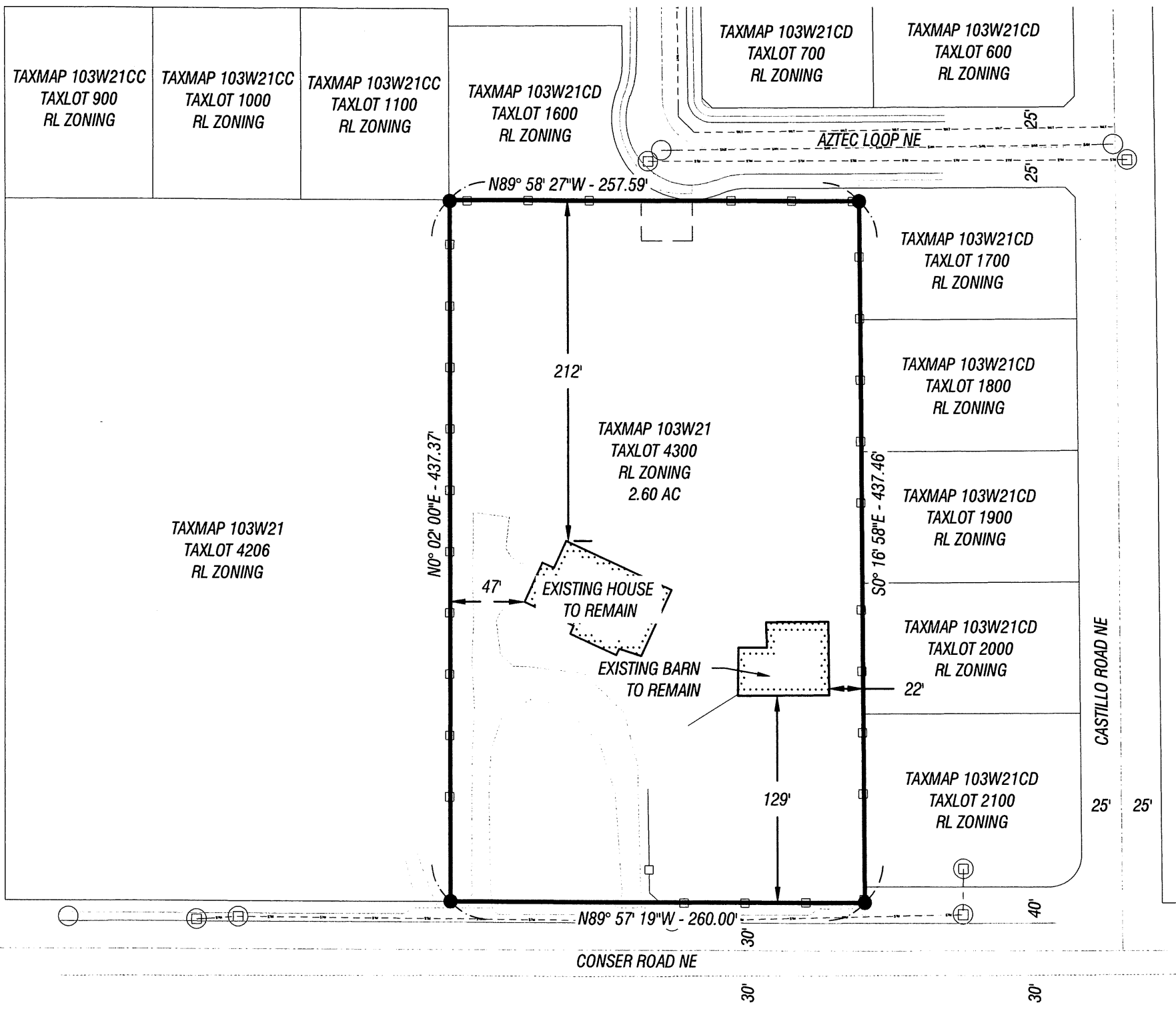
PROPOSED

SCALE
1" = 80'
PROJECT NO.
15-234
TOTAL SHEETS
2

PROP

REUSE OF DOCUMENTS: THIS DOCUMENT, AND THE IDEAS AND DESIGNS INCORPORATED HEREIN, AS AN INSTRUMENT OF PROFESSIONAL SERVICE, IS THE PROPERTY OF LEI ENGINEERING AND IS NOT TO BE USED, WHOLE OR IN PART, FOR ANY OTHER PROJECT WITHOUT THE WRITTEN AUTHORIZATION OF LEI ENGINEERING. © LEI ENGINEERING

FILE PATH: F:\15234\15-234-2001\15-234-2001.dwg 2021-12-23 1:48 PM
 LAYOUT EX DESIGN CHECKED DRAWN APPROVED
 #####
 #####
 #####



GENERAL NOTES:

- THE LOCATION OF THE UTILITIES, SHOWN HEREON, DETERMINED BY ABOVE GROUND EVIDENCE, IS APPROXIMATE. LEI MAKES NO WARRANTIES TO THE LOCATION OF THE UTILITIES. THE CONTRACTOR SHALL CALL FOR PRIVATE UTILITY LOCATES AND FIELD VERIFY ALL UTILITIES BEFORE CONSTRUCTION ACTIVITIES.
- THE BOUNDARY SHOWN ON THIS MAP IS FOR ENGINEERING PURPOSES ONLY. NO MONUMENTATION SHALL BE SET AND THIS MAP SHALL NOT BE FILED WITH THE COUNTY AS RECORD. CONTROL SHOWN HEREON IS FOR CONSTRUCTION USE, AND IS TEMPORARY.
- THE BUILDING FOOTINGS WERE NOT EASILY ACCESSIBLE AND THEREFORE, THE BUILDING LIMITS SHOWN HEREON, WERE MEASURED FROM THE BUILDING FASCIA.
- ON-SITE UTILITY LOCATIONS ARE APPROXIMATE, OBSERVED FROM ABOVE GROUND EVIDENCE, AND PIPE LOCATIONS AND DIRECTIONS ARE APPROXIMATED WITH THE USE OF CITY MAPS. NO AS-BUILT PLANS HAVE BEEN PROVIDED OR REVIEWED AT THIS TIME.
- VERTICAL DATUM LOCAL ASSUMED. HORIZONTAL DATUM LOCAL ASSUMED.

LEGEND

	EXISTING	PROPOSED
SURVEY MONUMENT	●	○
WATER METER	□	■
WATER VALVE	⊗	⊗
SANITARY SEWER CLEANOUT	○	●
SANITARY SEWER MANHOLE	○	●
STORM SEWER MANHOLE	⊕	⊕
STORM SEWER CLEAN OUT	○	●
STORM SEWER CATCH BASIN	□	■
POWER POLE	○	●
BOUNDARY LINE	—	—
PROPERTY LINE	—	—
CENTERLINE	—	—
CURB	—	—
EDGE OF PAVEMENT	—	—
EASEMENT	—	—
FENCE LINE	—	—
GRAVEL EDGE	—	—
STORM SEWER LINE	—	—
SANITARY SEWER LINE	—	—
WATER LINE	—	—

ZUHLKE PARTITION
 3091 CONSER ROAD
 PREPARED FOR:
 JANICE ZUHLKE

LEI ENGINEERING & SURVEYING OF OREGON
 2564 19TH ST SE
 Salem, Oregon 97302
 (503) 399-3828
 www.leiengineering.com

EXISTING CONDITIONS

SCALE	EX
1" = 80'	
PROJECT NO.	
15-234	EX
TOTAL SHEETS	
2	

REUSE OF DOCUMENTS: THIS DOCUMENT, AND THE IDEAS AND DESIGNS INCORPORATED HEREIN, AS AN INSTRUMENT OF PROFESSIONAL SERVICE, IS THE PROPERTY OF LEI ENGINEERING AND IS NOT TO BE USED, WHOLE OR IN PART, FOR ANY OTHER PROJECT WITHOUT THE WRITTEN AUTHORIZATION OF LEI ENGINEERING. © LEI ENGINEERING